

May 27<sup>th</sup> 1887

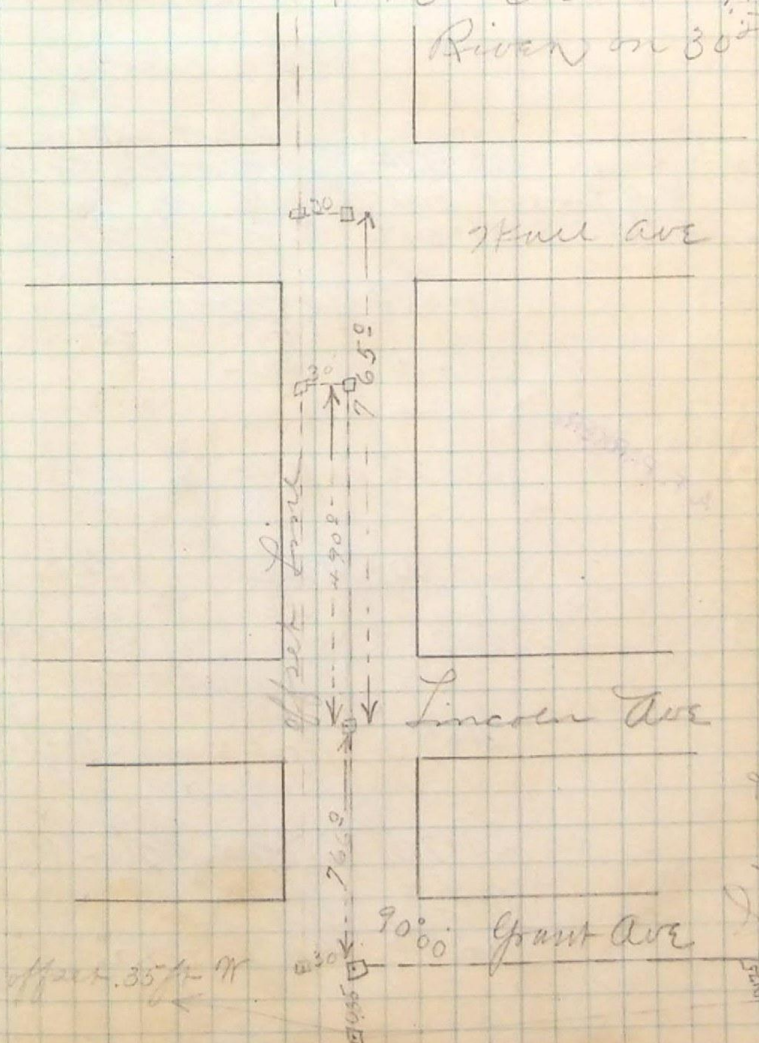
Center line of 30<sup>th</sup>  
St from Frank St to  
Hall Ave.

(19)

~~Union Pacific Ry~~ → To Ogden

A. F. PARKER

Line connecting City  
Survey with  
Prospective Bridge  
Site - Across Weber  
River on 30<sup>th</sup> St



Hall Ave

Lincoln Ave

Grant Ave

Prospective Bridge Site

Grant Ave 28 ft and Grant  
Ave 175 ft

Hall Ave 35 ft